

**First Alert®**

Email: [info@firstalert.eu](mailto:info@firstalert.eu)  
Web: [www.firstalert.eu](http://www.firstalert.eu)

BRK Brands Europe Ltd  
Unit 6, Carter Court  
Davy Way  
Waterwells Business Park  
Quedgeley  
Gloucester  
GL2 2DE  
United Kingdom

Home and Office Security Safes

## Operation & Installation Guide

MFCB3035DFE40DFEE0310

English

# **First Alert®**

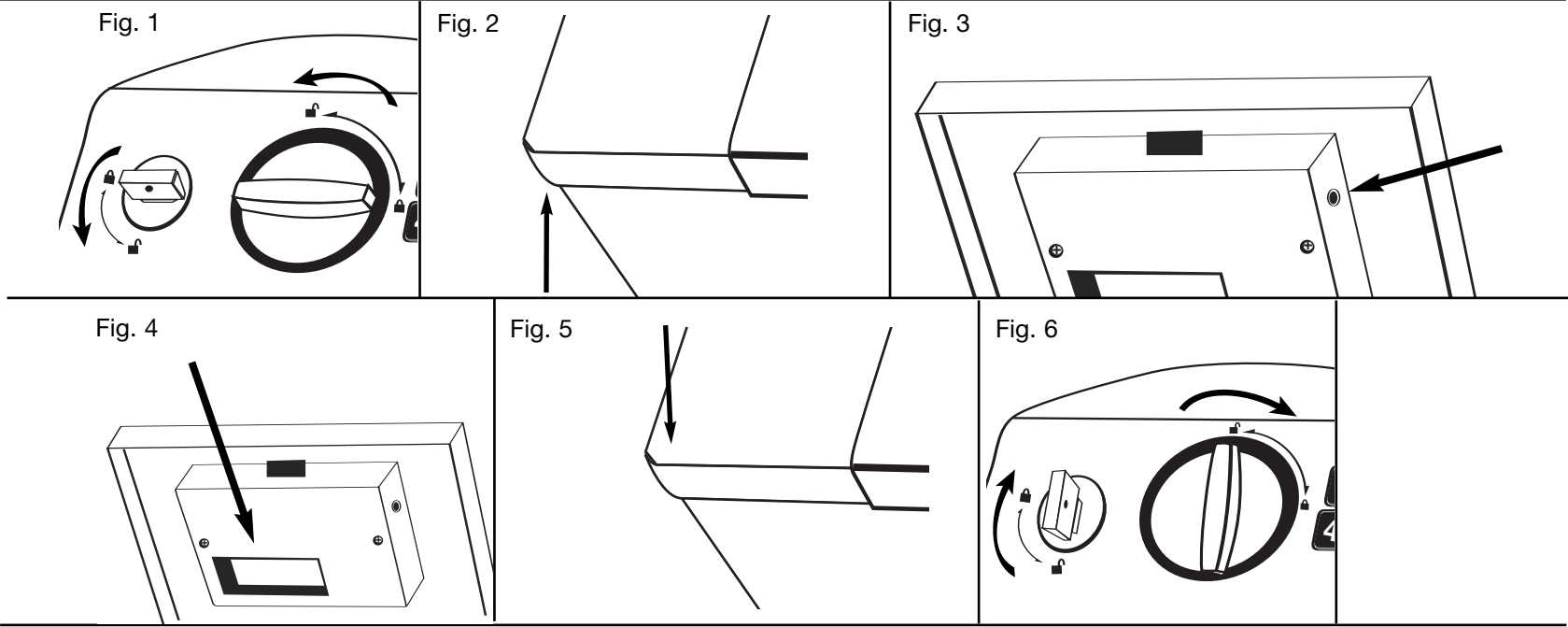
Model 3035DFE / 3040DFE

# **DELUXE SECURITY BOX**

## **with Digital Electronic Lock**

**Read These Instructions Very Carefully!**





Welcome to the First Alert® Family of Products

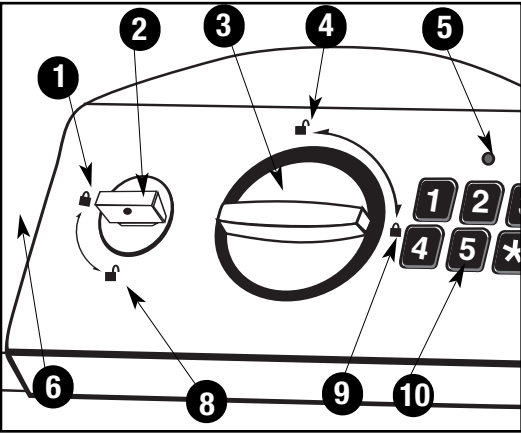
Along with peace of mind, your First Alert® Digital Security Box will provide many years of secure storage for your valuables.

For security, you should:

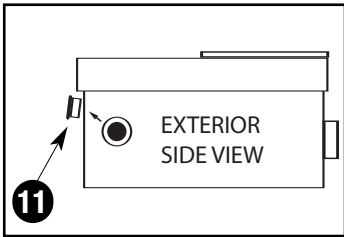
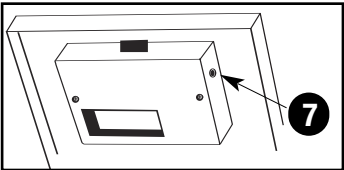
- ▶ Immediately set your own personal combination.
- ▶ Store the keys and personal combination away from the security box.

The pre-set factory code for your safe is:

3 \*



- 1. Locked override key icon
- 2. Override key lock
- 3. Rotating knob or latching handle
- 4. Unlocked knob icon
- 5. LED Indicator light
- 6. Security box lid
- 7. Red code setting button (see diagram to the right)
- 8. Unlocked override key icon
- 9. Locked knob icon
- 10. Digital keypad buttons
- 11. Security cable attachment hole plug



Your Security Box Includes

- (4) “AA” Batteries
- (1) Foam pad providing added protection for your valuables
- (2) Override keys
- (1) Key lock cover
- (1) 4 foot steel secure cable (3040DFE)
- (1) Security cable attachment hole plug (3040DFE)

Customer Support

BRK Brands Europe Ltd  
Unit 6, Carter Court  
Davy Way  
Waterwells Business Park  
Quedgeley  
Gloucester  
GL2 2DE  
United Kingdom

Email: [info@firstalert.eu](mailto:info@firstalert.eu)  
Web: [www.firstalert.eu](http://www.firstalert.eu)

Replacement Keys

**Ordering Replacement Keys:**  
Additional keys can be purchased from BRK Brands Europe Ltd. Please have the following information ready:

- Name / Address / Telephone
- Security box Model Number
- Number of keys requested
- Key number (located on the lock)

Terms subject to change without notice

Appropriate Use of Your Security Box

Your steel Security Box is designed to provide minimal security against theft and is insulated with fire retardant material. For safes that provide maximum protection from fire or water damage, see your Security retailer, or visit our website [www.firstalert.eu](http://www.firstalert.eu)

Limited Warranty

BRK Brands Europe Ltd., (“The company”) warrants that for a period of one (1) year from the date of purchase, this product will be free from defects in material and workmanship. The company, at its sole option, will repair or replace this product or any component of the product found to be defective during the warranty period. Replacement or repair will be made with a new or remanufactured product or component. If the product is no longer available, replacement may be made with a similar product of equal or greater value. This is your exclusive warranty. This warranty is only valid for the original retail purchaser from the date of initial retail purchase and is not transferable. You must keep the original sales receipt. Proof of purchase is required to obtain warranty performance. BRK Brands Europe dealers, service centres, or retail stores selling this product do not have the right to alter, modify or in any way change the terms and conditions of this warranty.

This warranty does not apply to the finish on the product. This warranty does not cover normal wear and tear of parts or damage resulting from any of the following: negligent use or misuse of the product, use contrary to the operating instructions, disassembly, repair or alteration by anyone other than the company or an authorized service center, improper installation, or exposure to extremes of heat or humidity. Further, the warranty does not cover Acts of God, such as fire, flood, hurricanes and tornadoes.

The company shall not be liable for any incidental or consequential damages caused by the breach of any express or implied warranty. The company is also not responsible for: costs associated with removing or installing the product; damage or loss of the contents of the product; nor for the unauthorized removal of the contents; or damages incurred during shipment.

Except to the extent prohibited by applicable law, any implied warranty of merchantability or fitness for a particular purpose is limited in duration to the duration of the above Warranty Period.

## Getting Started

### STEP 1: Locate Override Keys

Keys and batteries are stored in the packing material. Remove them before discarding the box.

### STEP 2: Opening your Security Box using your Override Key

- ▶ Remove cover from key lock.
- ▶ Insert Override Key into key lock and turn the key counter clockwise one quarter turn to the unlocked position.
- ▶ Turn the knob counter-clockwise one quarter turn to the unlocked position. (fig.1)
- ▶ To open, lift from the outer edge of the lid. (fig.2)

### STEP 3: Installing Batteries

- ▶ Locate the battery cover on the back side of the lid. (fig.4)
- ▶ Slide the cover off the battery compartment.
- ▶ Properly insert batteries, noting correct direction, replace cover and close the Security Box lid.
- ▶ Return the Override Key and the knob to the locked position.

**NOTE:** Clean the battery contacts in the battery compartment and on the batteries before installing new batteries.

### STEP 4: Opening your Security Box using the pre-set factory code

**THE PRE-SET FACTORY CODE IS 3 \***

- ▶ Using the keypad, enter the factory pre-set code. The LED will flash a green light and stay green for 10 seconds after the \* button is pressed. You will hear the Security Box unlock.

**NOTE: You have 10 seconds to open the Security Box. If the green light goes out, you will have to re-enter the code.**

- ▶ To open, turn the knob from the locked position to the unlocked position, one quarter turn counter-clockwise. To open, lift from the outer edge of the lid. (fig.2)
- ▶ If the LED light flashes red after you enter the code, this means the code was entered incorrectly and the Security Box will not open.

**NOTE: If an incorrect code is entered 3 times in a row, the Security Box will automatically shut down for 4 minutes before it can be opened again using the correct code. During this delay, the Override Key can be used to open the Security Box.**

## Programming your Personal Passcode

**NOTE: For your security, immediately re-program the digital lock to your Personal Passcode.**

Open your Security Box with the Override Key or with the pre-set factory Passcode.

- ▶ On the inside of the lid, find and press the red button located to the side of the battery compartment (Fig.3). The LED light above the keypad will flash orange.
- ▶ Enter your personal Passcode, up to 5 digits, followed by the \* button and then repeat a second time. You must enter the number twice.
- ▶ For example: 1 2 3 4 5 \* - 1 2 3 4 5 \*  
After the first entry, the LED will flash orange. After the second entry, the LED will flash green and then go out.
- ▶ Your Personal Passcode is now saved. Write it down and store it in a secure place away from the Security Box.
- ▶ Close the lid of your Security Box and return the knob to the locked position (Fig. 6). If the override key was used, turn to the locked position, remove and replace the lock cover.

**NOTE:** The factory pre-set code is no longer active and cannot be used to open the Security Box.

## English

3

## Closing and Securing your Security Box

**Be careful not to overfill your Security Box or obstruct the door from completely closing.**

- ▶ Make sure knob is in the unlocked position.
- ▶ Make sure lid is closed completely. (Fig. 5)
- ▶ Turn the knob from the unlocked position one quarter turn clockwise to the locked position. Your Security Box should now be secured.

**NOTE:** While the override key is in the unlocked position you can open and close the Security Box by turning the knob from the locked to the unlocked position and back again without entering your personal code. To secure your Security Box, make sure that you have turned the override key to the locked position and have stored the key away from the Security Box in a safe place.

## Troubleshooting

- ▶ **No light from LED:** This indicates that the batteries are expired and need to be replaced. To change the batteries, see Getting Started STEPS 2 & 3.

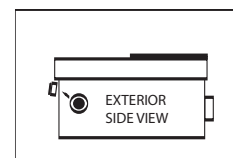
**NOTE: Replacing batteries does not erase your personal code.**

- ▶ **The LED is blinking a red light:**  
This means that your batteries are low. To change your batteries, see Getting Started STEPS 2 & 3.
- ▶ **Warning: DO NOT FORCE THE KNOB**  
If forced, the knob will break and your Security Box will be damaged. When operated correctly, the knob will function so that it can be turned easily into the opened position.

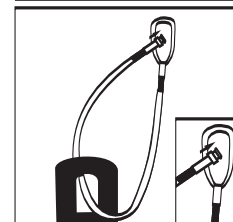
**If you have additional questions while operating your Security Box, please contact BRK Brands Europe Ltd.**

## Security Cable

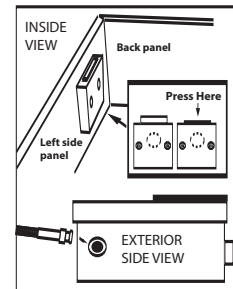
**Model 3040DFE includes security cable.**



- 1 Remove the plug from security cable attachment hole.



- 2 Loop cable around desired object and then through itself.



- 3 Depress cable release button and while holding down, insert security cable into the hole as shown in diagram, then release button.

## English

4